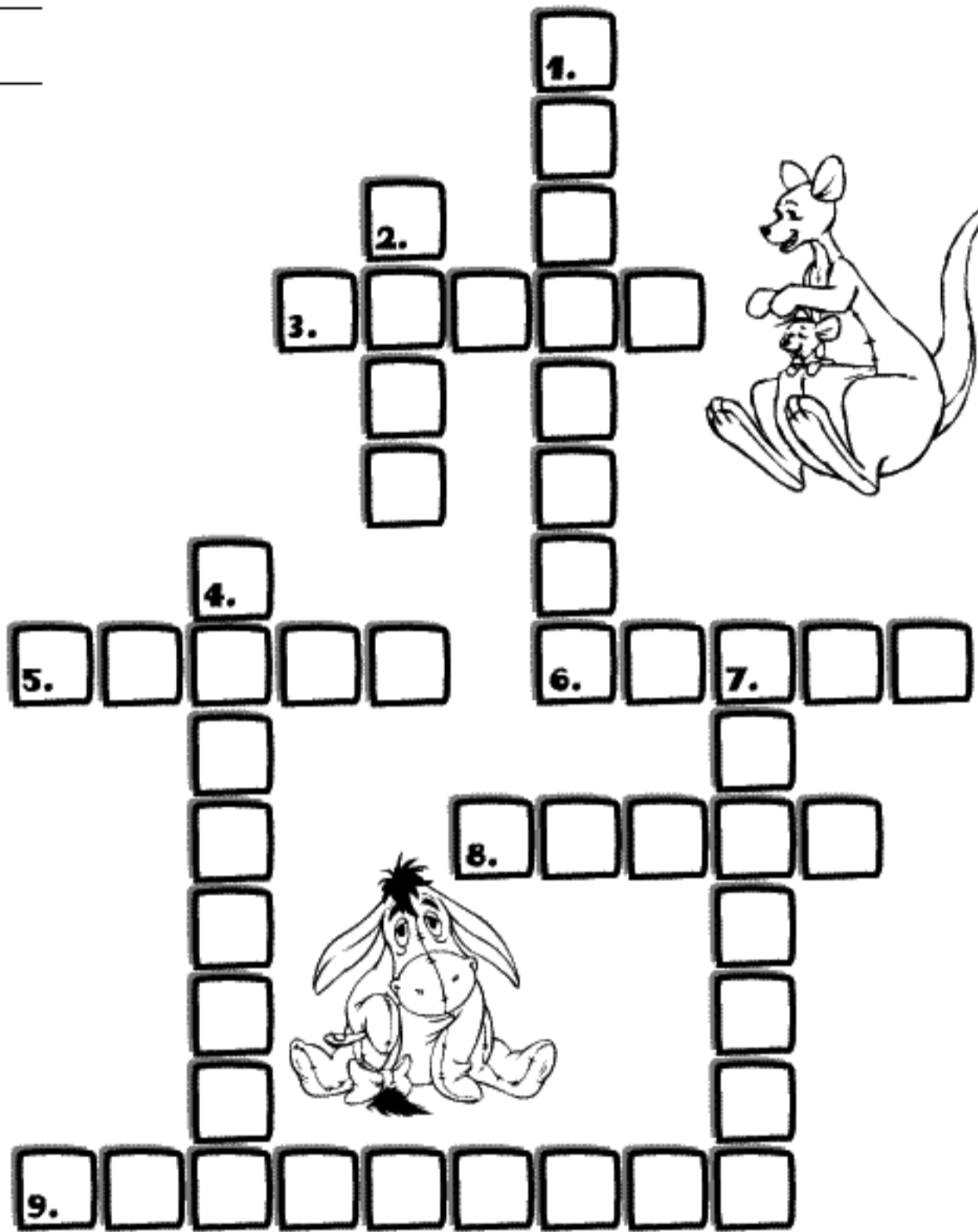
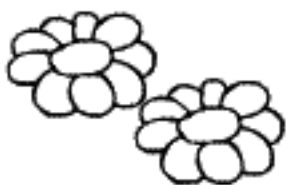
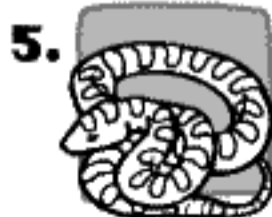


# WILD ANIMALS CROSSWORD

↓ DOWN

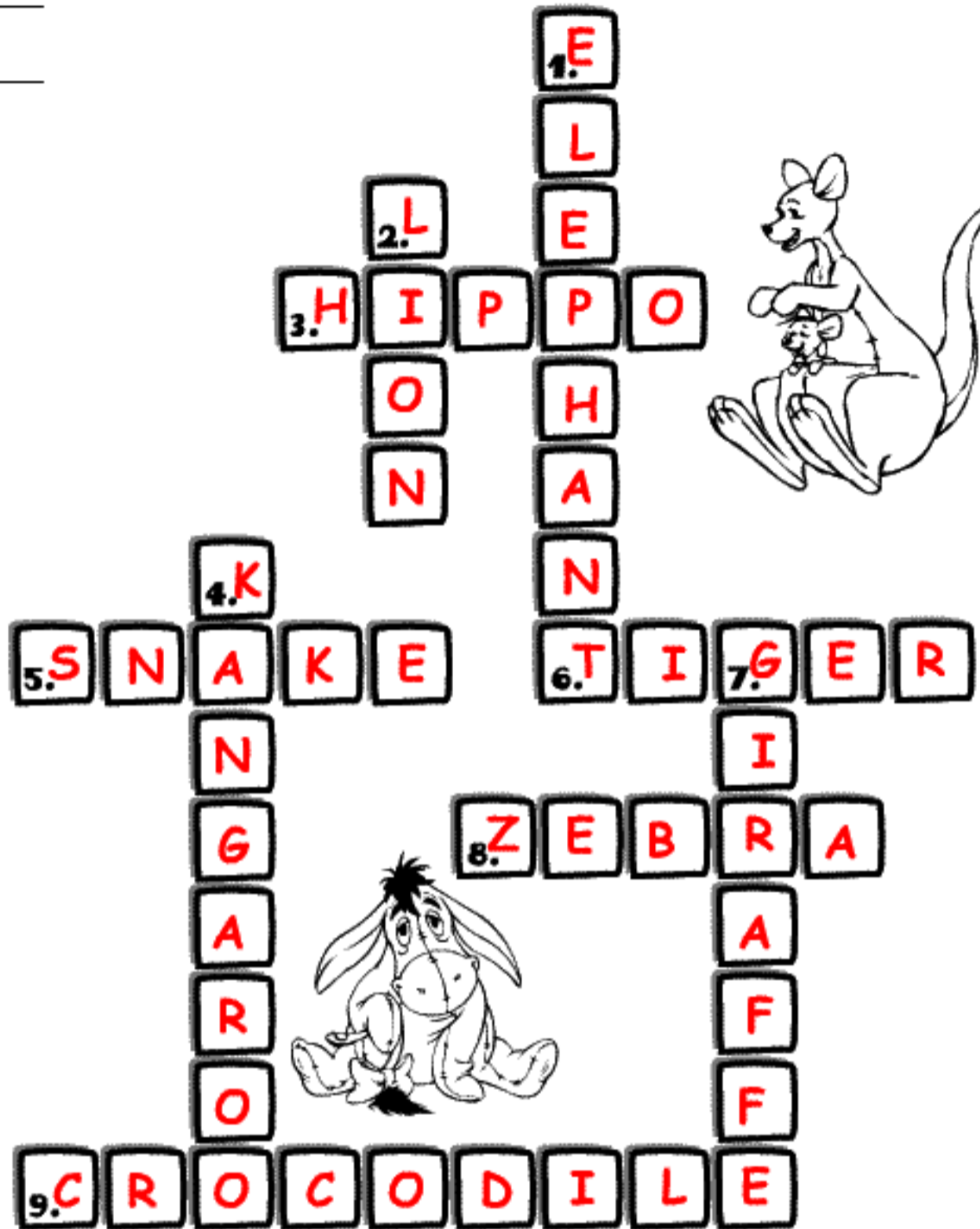


ACROSS →

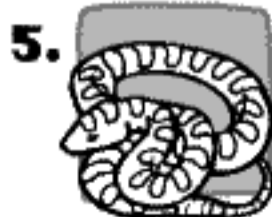


# WILD ANIMALS CROSSWORD

↓ DOWN



ACROSS →



# WILD ANIMALS CROSSWORD

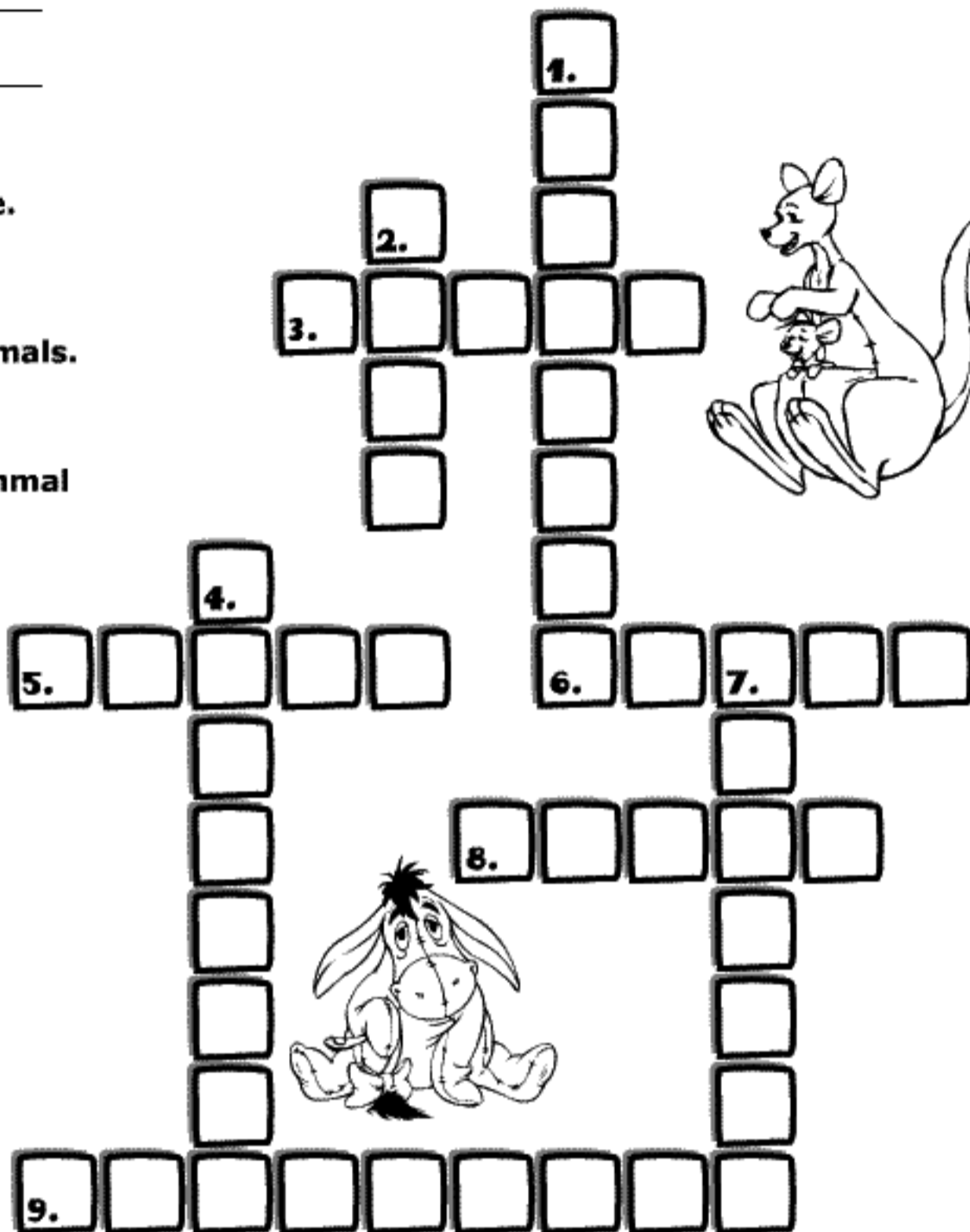
## ↓ DOWN

1. Has a long nose.

2. The king of animals.

4. A pouched mammal that hops.

7. Has a long neck.



## ACROSS →

3. Grey and big, loves water.

5. Has no legs.

6. Has black and orange stripes.

8. Has black and white stripes.

9. A meat-eating reptile.

# WILD ANIMALS CROSSWORD

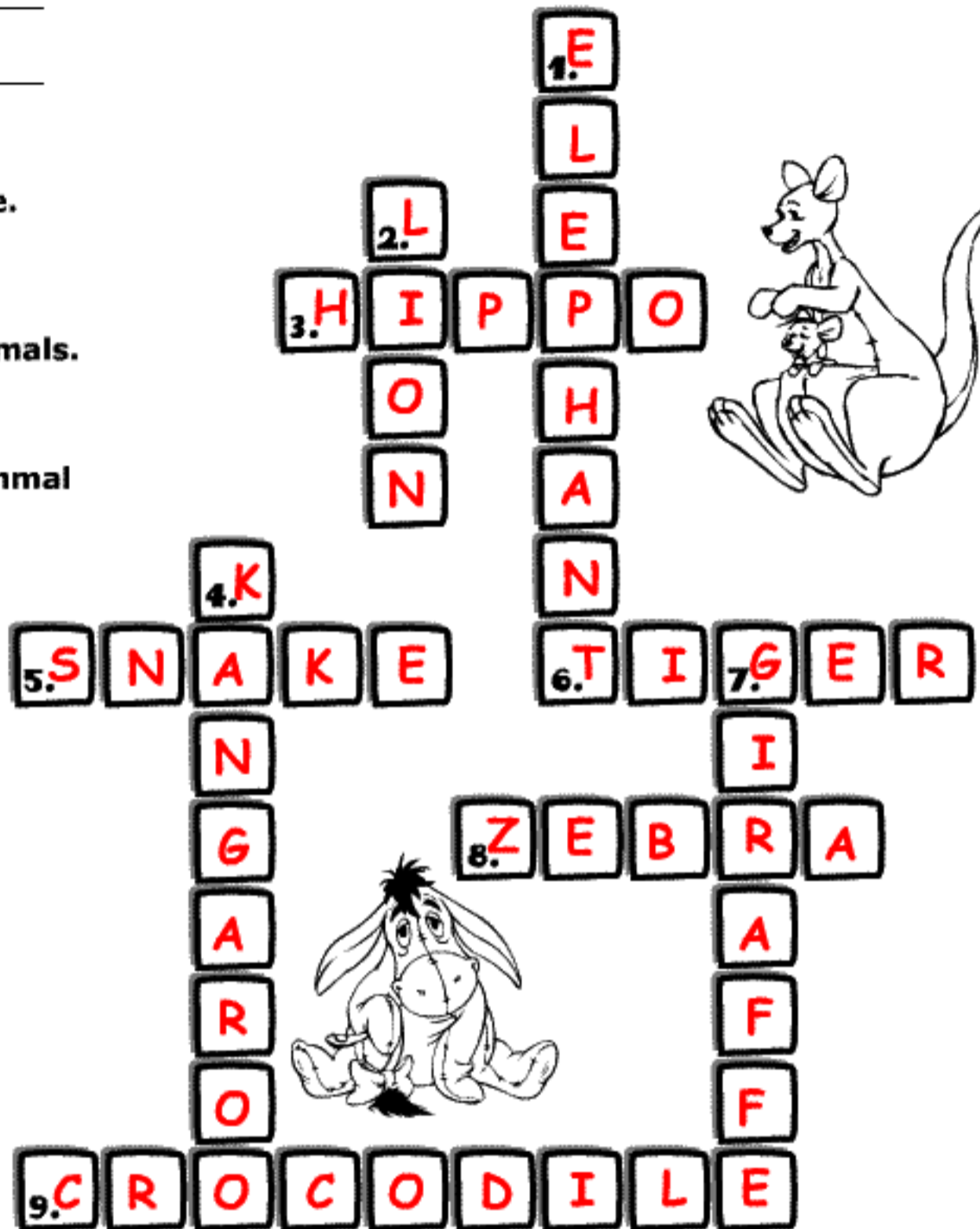
## ↓ DOWN

1. Has a long nose.

2. The king of animals.

4. A pouched mammal that hops.

7. Has a long neck.



## ACROSS →

3. Grey and big, loves water.

5. Has no legs.

6. Has black and orange stripes.

8. Has black and white stripes.

9. A meat-eating reptile.