

# YOUR FAVOURITE COLOUR

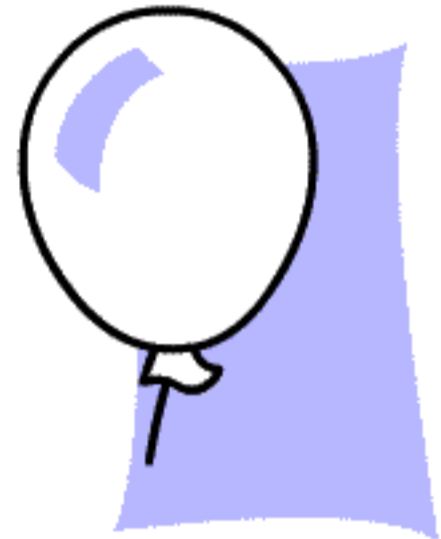
WHITE  
GREEN  
YELLOW  
BLUE  
RED  
BLACK  
PURPLE  
BROWN  
PINK  
ORANGE

Whether we are a vibrant Orange, or a peaceful Blue, our colour preferences are a key to understanding our personalities.

What does your favourite colour reveal about you?

## WHITE

Symbolic of purity, innocence, and naivete, white has strong connotations of youth and purity. It may also symbolize a desire for simplicity or the simple life.



## GREEN

You are very strong-willed and determined and can accomplish much when left alone and undisturbed. Easy-going and original, you are capable of relaxing and enjoying the finer things in life. You have an eye for art. You work hard to improve your life and to surmount the tensions involved in the struggle.



## **YELLOW**

**You are an original and powerful thinker, capable of overcoming great obstacles. You are easy-going and enjoy the finer things in life. You have an eye for art. You are calm and relaxed and you try not to "rock the boat". Searching for new ideas, methods and styles, you can be very productive when focused on a course of action.**



## **BLUE**

**You enjoy a peaceful environment in which to relax and appreciate life. You have a refined sense of beauty. You are capable of persisting against all odds when determined to reach a goal. You are intent on establishing a personal attitudinal framework within which to accomplish your goals.**



## **RED**

**You have incredible will-power and you are capable of overcoming obstacles that would stop others. You enjoy a pleasant and colorful environment. You are capable of bursts of high energy spontaneity, though generally more "laid back". You are energetic and interested in many areas of life. You are capable of accomplishment when consciously focused and persistent.**



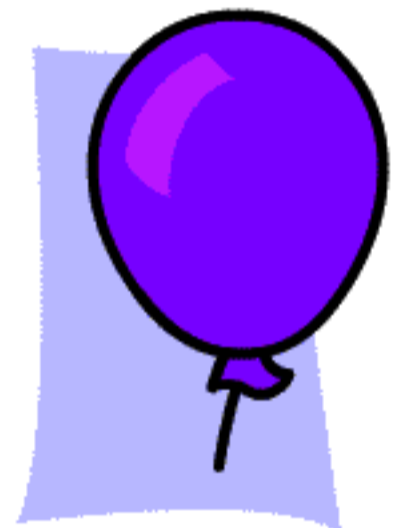
## **BLACK**

**You demand a calm environment, free of conflict and disagreement. You prefer natural to artificial. You are capable of being comfortable in conditions that would bother others. You are not easily disconcerted. You enjoy attention, but are unsure of how to handle it. Just treat others as you'd like to be treated. It works!**



## **PURPLE**

**You are very spontaneous; you have a quick and original mind that knows no boundaries. You are comparatively conservative and appreciate beautiful surroundings, especially in nature. You are relaxed and self-assured. You work well with others. You are a unique individual, and have unusual tastes, but you're quite comfortable among more conservative peers.**



## **BROWN**

**You are natural and easy-going, you prefer a calm environment. You are attracted to the outdoors. You have a refined sense of beauty. You have a rather conservative and well-ordered mind, you are not attracted to the bizarre. You are comfortable with your current value system, you are not entertained by fads or styles.**



## **PINK**

This colour embodies the gentler qualities of Red, symbolizing love and affection without passion. Pink desires protection, special treatment, and a sheltered life. Pink people require affection and like to feel loved and secure, perhaps wanting to appear delicate and fragile. Pink people tend to be charming and gentle, if a trifle indefinite.



## **ORANGE**

This colour of luxury and pleasure appeals to the flamboyant and fun-loving person who likes a lively social round. Orange people may be inclined to dramatize a bit, and people notice them, but they are generally good-natured and popular. They can be a little fickle and vacillating, but on the whole they try hard to be agreeable. Orange is the colour of youth, strength, fearlessness, curiosity, and restlessness.



*adapted from Quiz Box*